



NEW FILTER CLEANING SYSTEM



PNEUMATIC CONVEYOR WX5

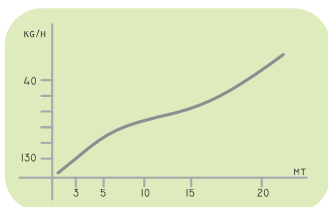
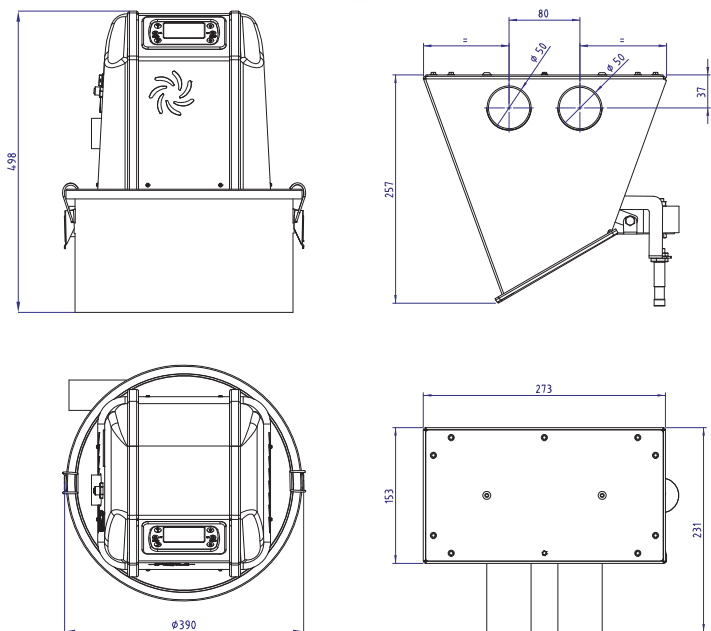
The WX5 pneumatic conveyor is the ideal solution for dosing granular biomass to automate your stove system with minimal costs and maintenance. It works as ash-cleaner too.

- ⇒ IDEAL SYSTEM TO FEED BIOMASS STOVES AND INSERT FIREPLACES
- ⇒ AUTOMATIC OPERATION
- ⇒ ADAPTABLE TO ANY HEATING SYSTEM- AUTOMATIC OPERATION
- ⇒ CHRONO TIME SETTING
- ⇒ REMOTE CONTROL PER 3G/LAN

Standard equipment

- ◆ Control panel with black-lit lcd display
- ◆ Polyester cartridge filter
- ◆ level sensor
- ◆ Product exhaust valve
- ◆ Alimentation shuko cable 2 mt
- ◆ Sensor alimentation cable 10 mt

| MODEL | Unit of measure | WX5 |
|--------------------------|-----------------|-------------------------|
| Rated electrical power | W | 1500 |
| Rated voltage | V | 110/220 |
| Rated frequency | Hz | 50/60 |
| Internal hopper capacity | lt | 3 |
| Max vacuum rate | Mbar | 275 |
| Filter cleaning system | / | Self-cleaning cartridge |
| Structure | Material | Steel/ ABS |
| Total weight | kg | 20 |
| Motor dimensions | mm | 390 x 390 x H 498 |
| IN/OUT holes | mm | Ø 50 |
| Hopper dimensions | mm | 153 x 273 x H 250 |



Accessories

| | | |
|--|----------------------------|--------|
| | Rubber sleeve for hole Ø50 | ART NO |
| | | MG50E |

| | | |
|--|--------------------|--------|
| | Sensor cable 20 mt | ART NO |
| | | CV20 |

| | | |
|--|---------------------------|---------|
| | Automatic changeover unit | ART NO |
| | | SPAUT04 |

| | | |
|--|-----------------|---------|
| | Mini hopper WX2 | ART NO° |
| | | WX5002 |

| | | |
|--|---------------------------|--------|
| | Remote control kit LAN/3G | ART NO |
| | | KTE3G |

| | | |
|--|-------------------|--------|
| | Compression clamp | ART NO |
| | | FS0001 |